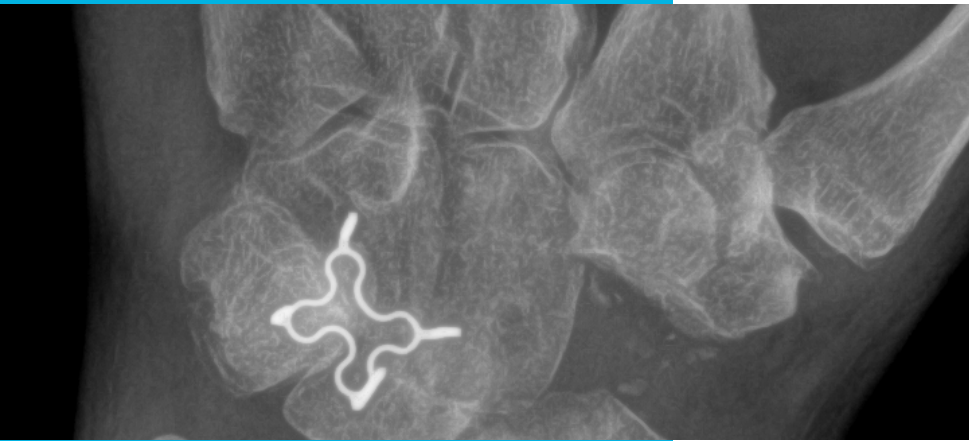


KORONA
Staple System

PRODUCT INFORMATION





Contents

Introduction	3
Features	3
Ordering Information	4
KORONA Quad Staple	
KORONA Tri Staple	
Instrumentation	5



HNM Total Recon is committed in providing surgeons and health care professionals with advanced surgical solutions for effective and time-saving treatment of their patients. Our most important task is meeting surgeons' needs. We accomplish this by creating key partnerships and driving innovative product development.

📍 20855 Northeast 16th Avenue, Suite C15
Miami, Florida 33179

☎ 1.866.291.8498 ✉ info@hnmtotal.com
📞 1.888.608.9788 🌐 www.hnmtotal.com

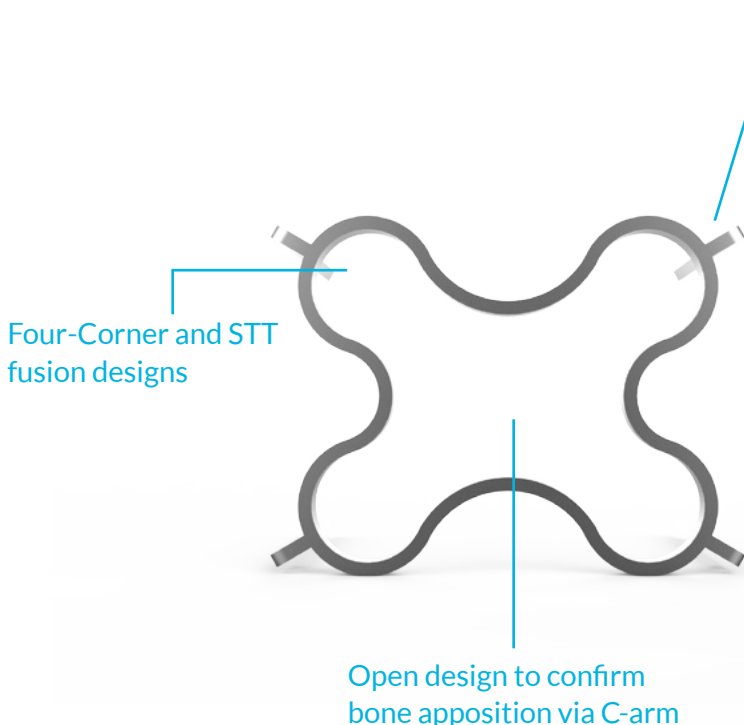
KORONA STAPLE SYSTEM

The KORONA Staple is a Nitinol memory alloy device designed to offer continuous, centralized compression across the fusion site. The design, which activates on patient body temperature, pulls all legs towards the center, offering uniform compression. It is available in both four leg (KORONA Quad) and three leg (KORONA Tri) versions, with three sizes of each version, plus three leg lengths per size. The four leg version is ideal for 4-corner fusions while the three leg version works well for STT fusions as well as many other applications.

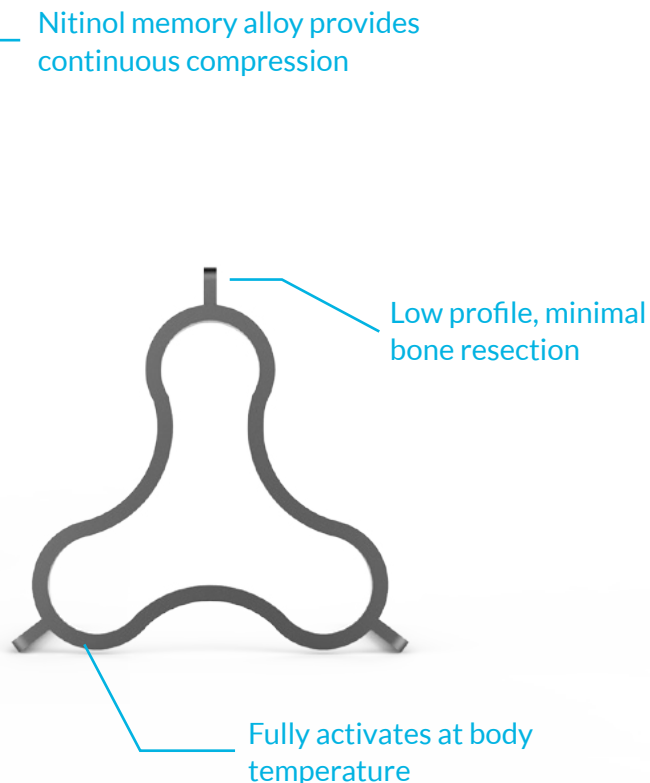
The low profile design of the KORONA Staple allows for minimal bone resection, maximizing cross sectional area for fusion, while minimizing impingement. The open center allows easy monitoring of the fusion site via fluoroscopy.

FEATURES

KORONA QUAD



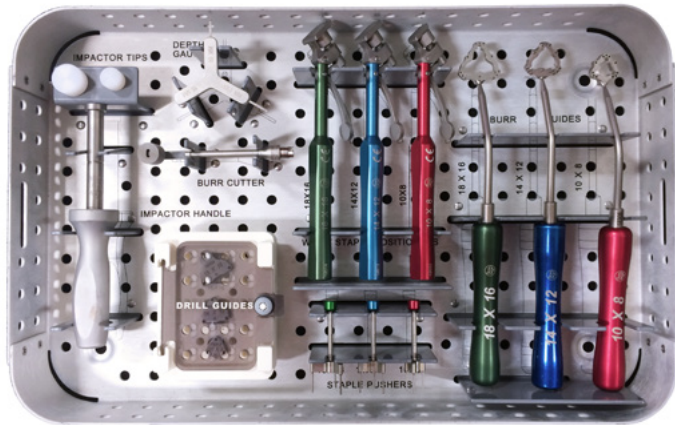
KORONA TRI



INSTRUMENTATION

KORONA TRI INSTRUMENT SET

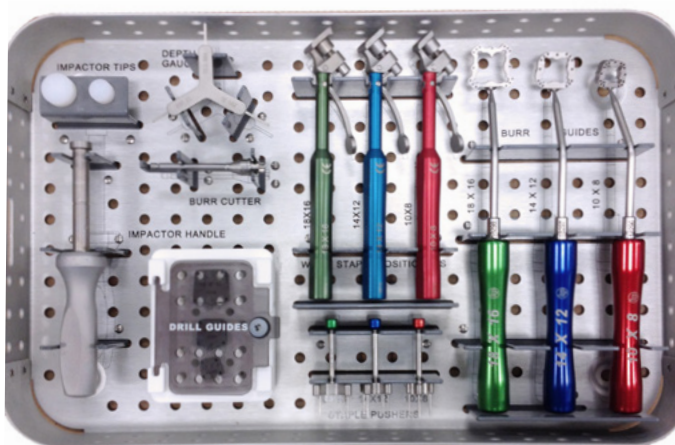
HTR-01-961078



Item #	Description	Pcs.
HTR-01-520359	Impactor Handle w/shaft	1
HTR-01-820384	Wrist Staple Small Impactor Tip	1
HTR-01-820485	Wrist Staple Large Impactor Tip	1
HTR-01-830102	Korona Tri Drill Guide 10x8	1
HTR-01-830203	Korona Tri Drill Guide 14x12	1
HTR-01-830304	Korona Tri Drill Guide 18x16	1
HTR-01-830408	Korona Tri Burr Guide ASM 10x8	1
HTR-01-830509	Korona Tri Burr Guide ASM 14x12	1
HTR-01-830610	Korona Tri Burr Guide ASM Leg 18x16	1
HTR-01-830711	Korona Tri Staple Pusher 10x8	1
HTR-01-830812	Korona Tri Staple Pusher 14x12	1
HTR-01-830913	Korona Tri Staple Pusher 18x16	1
HTR-01-830415	Wrist Staple Burr Cutter	1
HTR-01-830578	Hole Barbed Depth Gauge	1
HTR-01-950712	Wrist Staple Positioner 10x8	1
HTR-01-950813	Wrist Staple Positioner 14 x12	1
HTR-01-950914	Wrist Staple Positioner 18 x 16	1
HTR-01-940680	Tray for KORONA Tri Instrument Set	1

KORONA QUAD INSTRUMENT SET

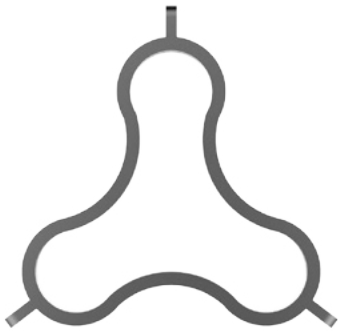
HTR-01-950143



Item #	Description	Pcs.
HTR-01-520359	Impactor Handle w/Shaft	1
HTR-01-820384	Wrist Staple Small Impactor Tip	1
HTR-01-820485	Wrist Staple Large Impactor Tip	1
HTR-01-820590	Korona Quad Drill Guide 10x8	1
HTR-01-820691	Korona Quad Drill Guide 14x12	1
HTR-01-820792	Korona Quad Drill Guide 18x16	1
HTR-01-820896	Korona Quad Burr Guide ASM 10x8	1
HTR-01-820097	Korona Quad Burr Guide ASM 14x12	1
HTR-01-821098	Korona Quad Burr Guide ASM Leg 18x16	1
HTR-01-820199	Korona Quad Staple Pusher 10x8	1
HTR-01-830200	Korona Quad Staple Pusher 14x12	1
HTR-01-830301	Korona Quad Staple Pusher 18x16	1
HTR-01-830415	Staple Burr Cutter	1
HTR-01-830578	Hole Barbed Depth Gauge	1
HTR-01-940680	Tray for KORONA Quad Instrument Set	1
HTR-01-950712	Wrist Staple Positioner 10x8	1
HTR-01-950813	Wrist Staple Positioner 14x12	1
HTR-01-950914	Wrist Staple Positioner 18x16	1

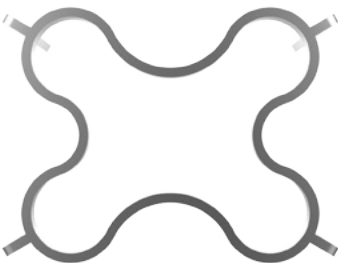
ORDERING INFORMATION

KORONA TRI STAPLE



Size	Leg Length	Item #
10mm x 8mm	10mm	HTR-01-820462
10mm x 8mm	12.5mm	HTR-01-820563
10mm x 8mm	15mm	HTR-01-820664
14mm x 12mm	10mm	HTR-01-800668
14mm x 12mm	12.5mm	HTR-01-800769
14mm x 12mm	15mm	HTR-01-800870
18mm x 16mm	10mm	HTR-01-800871
18mm x 16mm	12.5mm	HTR-01-800972
18mm x 16mm	15mm	HTR-01-801073

KORONA QUAD STAPLE



Size	Leg Length	Item #
10mm x 8mm	10mm	HTR-01-820759
10mm x 8mm	12.5mm	HTR-01-820860
10mm x 8mm	15mm	HTR-01-800761
14mm x 12mm	10mm	HTR-01-800862
14mm x 12mm	12.5mm	HTR-01-800963
14mm x 12mm	15mm	HTR-01-801064
18mm x 16mm	10mm	HTR-01-800165
18mm x 16mm	12.5mm	HTR-01-800266
18mm x 16mm	15mm	HTR-01-800367

HNMTOTAL

TOTAL RECON

📍 20855 NE 16 Ave Suite C15, Miami, FL 33179

☎ 1.866.291.8498

✉ info@hnmtotal.com

📠 1.888.608.9788

🌐 www.hnmtotal.com